

Bosque Co/83.

File 3119

Milam SCRIP.  
abt 1069

Along Cooper

45 1/6 Acres

Apr July 14/79

Certificate No.

Correct on map of Bosque Co.  
May 3/87 C.W. Pfeiffer.

Correct for patenting  
May 14/87 Shulley  
Patented May 16/87  
No. 477-42.10. Bryan

mKapt. Reg

Mgl. 82768

June 27  
83

CONTENTS.

No. 1. Application Certificate.

Nos. 2 and 3. Field Notes.

No. 4. Nov 8/82

Johnson  
3. Dreas Rupt  
Nov 18/83

Found  
4. H. Notes & sketch  
5. J. Whitworth 1/3000  
4/16/87  
Braulte

Repd June 9/86 to July 9/86

The State of Texas, J. P. the County Surveyor  
County of Bosque, J. of Bosque County, Texas;

I hereby make application for a survey  
of the vacant and unappropriated lands lying  
between the G. W. and Henry Doace pre-  
emptions about 7 miles S  $13\frac{1}{2}$  E from Meri-  
dian on the waters of Meridian Creek  
the same being 57 acres more or less.

This application is made by virtue  
of Chapter 52 Page 48 Laws of the  
Extra Session of the 16<sup>th</sup> Legis-  
lature of the State of Texas.

Meridian, Texas, J  
Aug 30<sup>th</sup> 1882. J

A. Cooper

Application of  
Alonzo Cooper

1/2 File 3119  
Milam. Dist.

Alonzo Cooper  
Application

Filed Nov 8/82  
L. Robinson  
Clerk

Filed for record  
Aug 30<sup>th</sup> 1882  
and correctly recorded  
the same day in Surveyors  
file Book page 213  
S. J. Siddall  
County Surveyor

31 30 29 28 27 26 25 24 23 22 21 20 19 18 17 16 15 14 13 12 11 10 9 8 7 6 5 4 3



The State of Texas, } Survey No. \_\_\_\_\_  
 COUNTY OF BOSQUE.

Field Notes of a Survey of 45 1/4 acres

of land made for Alouzo Cooper  
 it being \_\_\_\_\_ the land to which he is  
 entitled by virtue of his application and said application  
 made in accordance with the acts of the call session

of the 16<sup>th</sup> Legislature approved July 14<sup>th</sup> 1879 providing  
 for the sale of the unappropriated public domain of the State  
 of Texas application dated August 30<sup>th</sup> 1882  
 said land is situated <sup>in Bosque Co</sup> about 7 Miles <sup>80</sup> S <sup>8</sup> from Meridian on  
 the waters of Meridian Creek

Beginning at the S.E. cor of G.W. Daves' monument on a pile  
 of rocks Thence S 40 W 850 rs to said Daves' S.W. cor a Live Oak marked  
 D Thence S 30 E 300 rs to J.B. Daves' N.W. cor a pile of rocks on the  
 South side of a mountain Thence N 60 E 850 rs a stake in the West  
 line of J. Whitworth's League or Thence N 50 W 300 rs to the  
 place of beginning Surveyed Oct 20<sup>th</sup> 1882

G. A. Sparkes } c  
 D. B. Barnes } c

I S. J. Siddall County Surveyor of Bosque County  
 Texas do hereby certify that the foregoing survey was made  
 according to law and that it was actually made on the ground  
 and that the field notes are recorded in my office in  
 Book 5 page 216

S. J. Siddall  
 County Surveyor of Bosque County  
 Texas

File 3119

Milam Dorit

Alonzo Cooper

Field Notes

45 1/6 acres

Filed Nov 8/87

J. A. Robinson

chf clk

Consult on map of Bosque  
County. May 3/87

C. W. Proffler.

Patented May 16/87

Proffler

Dec 27  
1887

*Meredian TSP. car*

No. 3661

Treasurer's Office,

Austin, Texas, Nov. 18<sup>th</sup> 1882

Received of James M Robertson on account of A. Cooper

         the sum of Twenty two <sup>60</sup>          Dollars,

the same being payment in full on 40 1/2 acres unappropriated Public Lands in Dosque

County, under "An Act to provide for the sale of a portion of the unappropriated Public Lands of the State of Texas, and the investment of the proceeds of such sale," approved July 14, 1879.

*3119 mil*

W. W. Starnes  
W. W. Starnes  
Treasurer.

3/10 - 3119 -

Alango Cooper -  
Mil. Secy -

Texas Rept.

Dated Nov<sup>r</sup> - 18/53

D A Robinson

By A.R.

The Field Notes of the Jeremiah Whitworth  
1/3 League Survey as shown by Commissioners  
Report at the Gateway Term of the District  
Court in and for Basque County & as are  
as follows to wit:

Beginning 950 Tns N30W  
from the SW corner of the Elizabeth Gee  
Survey; thence N30W 1150 Tns to the NW  
corner of the said Gee Survey a pile of rocks;  
thence S60W 120 Tns to the SW corner of  
the L M Armstrong Survey a pile of  
rocks; thence N30W 350 Tns. to the E.E.  
corner of W R Mott Survey a pile of  
rocks in E. Pullerton's field; thence S60W  
2090 Tns. SW corner of the said Mott a  
pile of rocks; thence S30E 10 Tns 140 Tns  
160 Tns 160 Tns 227 Tns & 580 Tns cross the  
same branch 988 Tns another branch  
1400 Tns to the S.E. corner of a Survey  
in the name of heirs of Ananias Greer a  
pile of rocks; thence S60W 1425 Tns a pile  
of rocks for corner; thence S30E 2400 Tns  
a pile of rocks from which a Live  
Oak marked & bars S64E 19 Tns; thence N60  
E 587 Tns a pile of rocks for corner;  
thence S30E 50 Tns a pile of rocks for corner  
thence N60E 600 Tns a pile of rocks; thence  
S30E 650 Tns a corner on the north line  
of George Dees' preemption Survey; thence  
N60E 120 Tns to the said Dees' N.E. corner  
thence S30E 1198 Tns to corner on line  
of Henry Dees. thence N60E 100 Tns



1 said Deves N & E corner a pile of rocks  
 2 thence S 30 E 282 to the S. H. cor of this  
 3 survey; thence N 60 E 508 to the S. E.  
 4 corner a pile of rocks; thence N 30 W 3056  
 5 to a pile of rocks for corner; thence S 60  
 6 W 694 to a pile of rocks; thence N 30 W  
 7 1000 to a pile of rocks for corner; thence  
 8 N 60 E 1648 to the N & E corner of  
 9 Jasper County's preemption survey a  
 10 pile of rocks from which a Line  
 11 east marked X bars S 74 W 28 to <sup>thence N 30 W 440</sup> thence  
 12 N 60 E 774 to the place of beginning.  
 13

THE STATE OF TEXAS, }  
 COUNTY OF BOSQUE.

I, A. B. McKeay  
 H. W. MARSHALL, Clerk of the District Court, in and for the County and State aforesaid, do hereby certify

that the above and foregoing is a true and correct copy of the field notes of the Jeremiah  
 Whitworth 13 League Survey in Bosque County  
 as made by S. J. Siddall & County Surveyor, A. P.  
 Cooper and W. A. Smith who were appointed  
 by said District Court at the January term  
 thereof 1887. That said report was made at  
 the same term of Court and final judgment  
 made on said report in accordance to and  
 with the foregoing field notes all of which will  
 more fully appear by reference to the minutes  
 of said Court, and report of said Commissioners  
 now on file in my office.

IN TESTIMONY WHEREOF, I hereunto sign my name officially, and affix the seal of the  
 District Court of Bosque County, at office, in the Town of Meridian, this 12<sup>th</sup>  
 day of April A. D. 1887

A. B. McKeay  
 Clerk District Court Bosque Co., Texas.

By \_\_\_\_\_ Deputy.

30  
 31  
 32

-2217

4

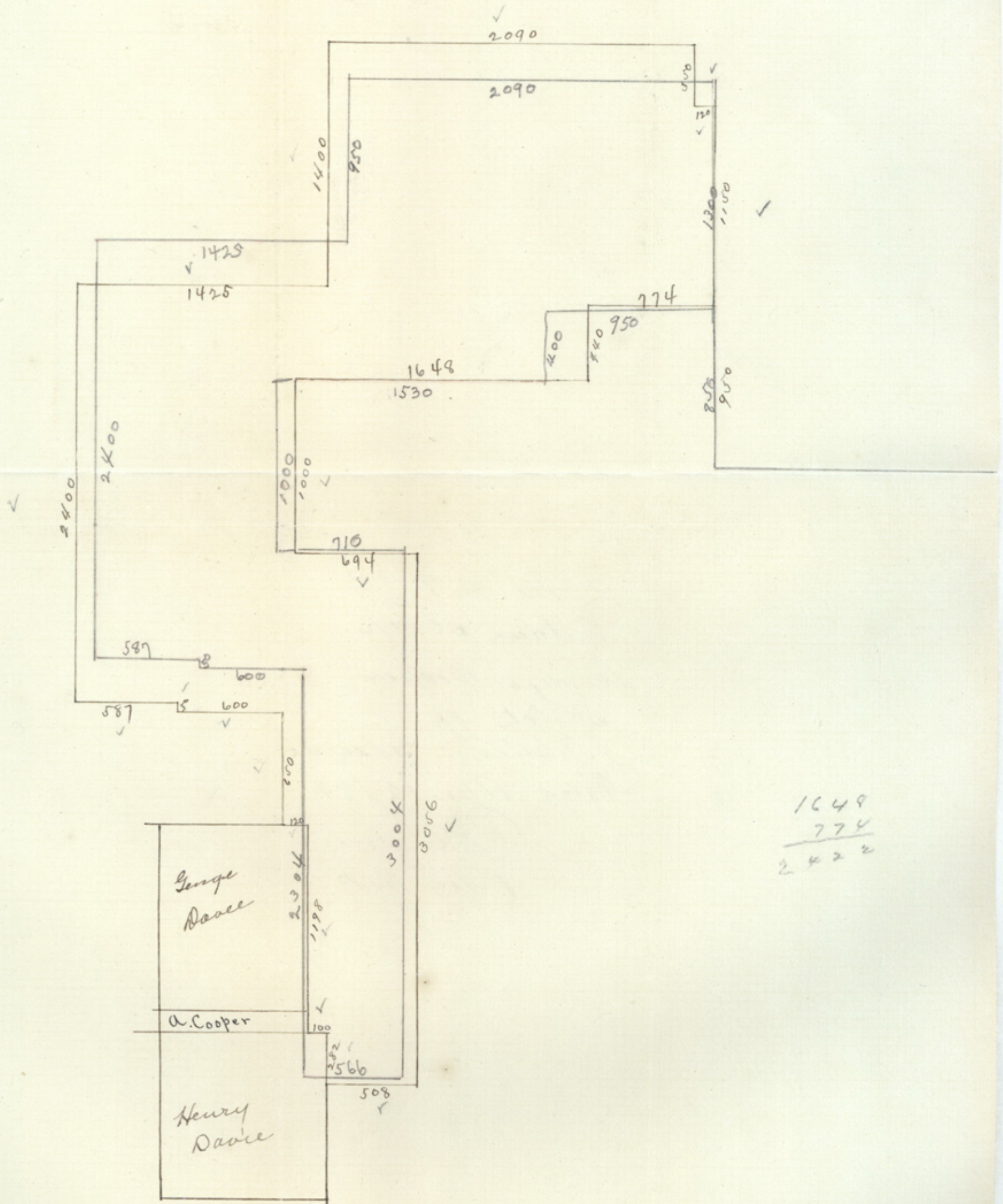
Certified copy of  
 Minutes of the  
 General Meeting  
 of the League  
 dated April 12<sup>th</sup> 1887  
 at the meeting held  
 at the Court House  
 County of ...

File 3119  
 Milam Series  
 G. Cooper  
 Certified Copy of  
 F. U. of J. Whitworth  
 1/3 League Ser.  
 Filed Apr. 15/87  
 A. H. Huxley  
 Clerk.

[Faint, illegible handwritten notes and stamps, possibly including a date like "APR 15 1887"]

Examined under the impression  
 The document was ordinary  
 notes - Hux

# Jeremiah Whitworth Survey of 1476 acres Bosque County.



1648  
 774  
 ---  
 2422

Red lines show survey by patent.  
 Black " " " " actual survey.

5

File 3119  
Milam Serip  
Alonso Cooper  
Sketch of  
J. Whitworth's League  
Filed Apr. 15 1887  
R. H. Hunt  
Chgo. Ill.