

Cherokee 76

File 1203

# NACOGDOCHES SCRIP.

Stat. 80-81

Juan Armendaris

Warranty 180 1/2 Acres  
459 1/2 "

See 51 Galveston S for original Warranty

Copy Certificate No. 1.

Covers J. Finnan (1-722)  
and J. Walters small  
survey (1-1166.) Other  
will correct on map  
of Cherokee Co.  
Octbr. 19/76. Eschwege.

Patent. pld.  
11/14/76

Patent to W. H. F. W. &  
J. R. Bonner. a few.

Oct 20/76. Fisher.

Patented October 23/76

James D. Adams

No. 278 vol. 26

Large survey covers J. Walters 1-1166 and  
J. Finnan 1-722 - otherwise correct on map  
of Cherokee County June 19/77  
(Surrounded by C. W. Pfeiffer.)  
43600

March 1  
1877

Sept 25/76

Vertical  
field notes  
Transfer  
Sept 20/76

Jackson

Patent. pld.

Patent large survey to  
W. H. F. W. & J. R.

Bonner, a few.

July 6/77.

Patented July 13/1877.

C. C. Anderson

No 235 vol 28

Patent in office  
Aug 20/78  
Bonner Bonner

No. A.....

# Land Scrip.

640 ACRES.

The State of Texas,

GENERAL LAND OFFICE,

AUSTIN, JUNE 29, 1875.

This Certificate entitles **Juan Armendaris** (Commissioner of the town of Socorro, in El Paso County) or his assigns to **SIX HUNDRED AND FORTY ACRES** of land, to be located upon any of the vacant, unreserved and unappropriated public domain of the State of Texas, and is issued in accordance with the provisions of "An act to encourage the construction of canals and ditches for navigation and irrigation," Approved March 10, 1875.

IN TESTIMONY WHEREOF I hereunto set my hand and affix the impress of the Seal of said Office, the date first above written.

*J. J. Groos*  
Commissioner.

*469 1/2 Acres patented July 13/75*  
*180 1/2 Acres patented*

## General Land Office,

Austin, Texas,

*June 24<sup>th</sup> 1876*

I, **J. J. GROOS**, Commissioner of the General Land Office of the State of Texas, DO HEREBY CERTIFY, that the annexed is a correct and true copy of the Original Certificate on file in this Office, and that the Field Notes of a Survey, located in *Galveston* county, made by virtue of the aforesaid Certificate, have been returned to this Office, and having been found to conflict with *Older Surveys* that this Copy is floated in lieu of the Original Certificate, for re-location, but without any prejudice to the rights of any person by virtue of such Certificate, in accordance with an act, entitled, "An Act to better protect the Papers, Record and Files in the General Land Office," approved June 2, 1873.

In Testimony Whereof, I hereunto set my hand, and affix the impress of the seal of said office, the day and date above written.

*J. J. Groos*  
Commissioner.

*51 Galveston Scrip transfer to El Eggleston*

General Land Office  
Austin July 19<sup>th</sup> 1876

This is to certify that the within Certificate may be located as  
Headright Certificates are located, upon more than one Survey.  
All surveys, after the first, must be surrounded by previous  
surveys or must exhaust the Certificate.

To certify which I do by signing my name  
and affix the Seal of the General Land  
Office, the date above written

*J. P. Jones* Commissioner

File 1203

Accepted by Clerk

Juan Hernandez

Copy of Certificate

No 1.

San Antonio 19/76

*J. P. Jones*

96-26-01  
96-12-8  
96-60-9

St. Gabriel

State of Texas  
Cherokee County } Survey of 180 Acres of Land  
made by virtue of Land Scrip No. 1 for Six  
hundred and forty acres of Land issued to  
Juan Arrundain by J. J. Cross Com. Genl.  
Land Office on the 23<sup>rd</sup> day of June 1875  
in accordance with the provisions of an act  
to encourage construction of canals and dit-  
ches for navigation and irrigation. - Ap-  
proved March 7, 1875.

Said Survey is situated in Cherokee County on  
the waters of the Angelina River about 6 miles  
South <sup>55° East</sup> Eastwardly from the town of Russ.

Beginning at the SE corner of a Survey of 267.7  
acres of land made in the name of James Cross  
land on the NB line of a Survey of 540 acres in  
the name of J. Taylor a stake from which a Pine  
18 Ins in dia brs S 1/4 W 2 vs. a Pine 24 Ins in  
dia brs S 83 W 2 vs. Thence S 1393 vs to a corner  
of J. W. Woods survey a stake from which a  
Pine 8 Ins in dia brs N 46 W 2 vs. a Pine 8 Ins  
in dia brs S 74 87 vs. Thence West 665 vs to a  
NW corner of said Woods survey a stake from  
which a Pine 24 Ins in dia brs S 53 W 2 1/2 vs. A  
Post Oak 14 Ins in dia brs N 14 E 7 1/2 vs. Thence  
North with the EB line of the J. Lupton 640 acre  
survey 1255 vs to the NE corner of same a stake from  
which a Black Oak 10 Ins in dia brs N 26 vs  
a Black Oak 12 Ins in dia brs S 70 W 6 vs.

Thence West 672 vs to the SE corner of the John Taylor survey of 100 acres a stake from which a Hickory 10 Ins in dia brs S 60 W 10 vs. A Post Oak 12 Ins in dia brs S 75 E 9 vs. Thence North 138 vs to the SW corner of a survey of 267 1/2 acres in the name of James Crossland, Thence East 1337 vs to the place of beginning.

Surveyed Aug 31, 14<sup>th</sup> 1876. H. S. Quinn

Clinton Price Co. S. C. Co.

Van Mullan B. C. C.

State of Texas

Cherokee County } H. S. Quinn County

Surveyor of Cherokee Co.

do hereby certify that the foregoing survey was made according to Law and that the limits boundaries and corners of the same together with the marks natural and artificial are truly and correctly described therein and that said field notes are recorded in my office in Book "C" on pages 25647. This the 2, Sep. A. D. 1876.

H. S. Quinn  
C. S. C. Co.

2 File 1203

Macogdoches Descrip

Juan Armendaris

Field notes of

180 1/2 Acres

Filed Sept 19 / 76  
H. S. Quinn

Patented October 20 / 76  
James D. Adams

For 180 acres of Sept 20 / 76  
J. D. Adams

1 State of Texas }  
2 County of Travis }

3 Know all men by these  
4 presents that D. J. J. Eggleston for and in  
5 consideration of Two Hundred and Forty  
6 Dollars to me in hand paid by M. H. P. W  
7 & J. R. Donner do hereby sell, convey and deliver  
8 unto the said M. H. P. W & J. R. Donner  
9 Land for slip No 1 for Six hundred and forty  
10 Acre of land issued to Juan Armentavis  
11 Commissioner of the town of Socorro by the  
12 Commissioner General Land Office of the State  
13 of Texas on the 29<sup>th</sup> day of June A D 1875 and  
14 by the said Juan Armentavis conveyed to  
15 me on the 24<sup>th</sup> day of July A D 1875.

16 Witness my hand this 28<sup>th</sup> day of August  
17 A D 1876. *D. J. Eggleston*  
18  
19  
20

a

STATE OF TEXAS, )

COUNTY OF TRAVIS. )

Before me, IRVING EGGLESTON, a Notary Public for said County,  
duly commissioned and qualified, this day personally appeared \_\_\_\_\_

*I. I. Eggleston.*

to me well known, who acknowledged that *he*  
executed the foregoing instrument of writing and declared the same to be *his*  
act and deed, for the uses, purposes and considerations therein expressed.

To certify which I hereunto affix my hand and official seal, in the  
City of Austin, this the *28<sup>th</sup>* day of

*August* A. D. 187 *6*

*Irving Eggleston.*

Notary Public Travis County.

NAC SCRIP  
1203

File 1203

Macgdocha Scrip

E. J. Eggleston

To B. Traub

M. H. F. W. & L. R. Bonner

J. J. Eggleston

To B. Traub

M. H. F. W. & L. R. Bonner

Given April 19/74

J. J. Eggleston

|     |     |     |     |     |     |     |     |     |     |     |     |     |     |     |     |     |     |     |     |     |    |    |    |    |    |    |    |    |    |    |    |    |    |    |    |    |    |    |    |    |    |    |    |    |    |    |    |    |    |    |    |    |    |    |    |    |    |    |    |    |    |    |    |    |    |    |    |    |    |    |    |    |    |    |    |    |    |    |    |    |    |    |    |    |    |    |    |    |    |    |    |    |    |    |    |    |    |    |    |    |    |    |    |    |    |    |    |    |    |    |   |   |   |   |   |   |   |   |   |
|-----|-----|-----|-----|-----|-----|-----|-----|-----|-----|-----|-----|-----|-----|-----|-----|-----|-----|-----|-----|-----|----|----|----|----|----|----|----|----|----|----|----|----|----|----|----|----|----|----|----|----|----|----|----|----|----|----|----|----|----|----|----|----|----|----|----|----|----|----|----|----|----|----|----|----|----|----|----|----|----|----|----|----|----|----|----|----|----|----|----|----|----|----|----|----|----|----|----|----|----|----|----|----|----|----|----|----|----|----|----|----|----|----|----|----|----|----|----|----|----|----|---|---|---|---|---|---|---|---|---|
| 120 | 119 | 118 | 117 | 116 | 115 | 114 | 113 | 112 | 111 | 110 | 109 | 108 | 107 | 106 | 105 | 104 | 103 | 102 | 101 | 100 | 99 | 98 | 97 | 96 | 95 | 94 | 93 | 92 | 91 | 90 | 89 | 88 | 87 | 86 | 85 | 84 | 83 | 82 | 81 | 80 | 79 | 78 | 77 | 76 | 75 | 74 | 73 | 72 | 71 | 70 | 69 | 68 | 67 | 66 | 65 | 64 | 63 | 62 | 61 | 60 | 59 | 58 | 57 | 56 | 55 | 54 | 53 | 52 | 51 | 50 | 49 | 48 | 47 | 46 | 45 | 44 | 43 | 42 | 41 | 40 | 39 | 38 | 37 | 36 | 35 | 34 | 33 | 32 | 31 | 30 | 29 | 28 | 27 | 26 | 25 | 24 | 23 | 22 | 21 | 20 | 19 | 18 | 17 | 16 | 15 | 14 | 13 | 12 | 11 | 10 | 9 | 8 | 7 | 6 | 5 | 4 | 3 | 2 | 1 |
|-----|-----|-----|-----|-----|-----|-----|-----|-----|-----|-----|-----|-----|-----|-----|-----|-----|-----|-----|-----|-----|----|----|----|----|----|----|----|----|----|----|----|----|----|----|----|----|----|----|----|----|----|----|----|----|----|----|----|----|----|----|----|----|----|----|----|----|----|----|----|----|----|----|----|----|----|----|----|----|----|----|----|----|----|----|----|----|----|----|----|----|----|----|----|----|----|----|----|----|----|----|----|----|----|----|----|----|----|----|----|----|----|----|----|----|----|----|----|----|----|----|---|---|---|---|---|---|---|---|---|

4

File 1203

Tracydocher Scrip

Shaw Amundson

Field Notes

439 1/2

Filed Feb 27/77

J. M. Murray Co.

Patented July 28/77

J. C. Anderson

Aug 11/07

March 77  
S. H. H.

Thence South 1100 rs to the N.E. corner  
of the Wm Murray survey a stake  
from which a Black Jack 6 Ins in  
dia brs N 1/4 E 3 rs a Post Oak 7 Ins  
in dia brs N 7/8 W 4 rs. Thence West  
650 rs to N.W. corner of said Wm Mur-  
ray survey a stake from which a Hick.  
9 Ins in dia brs N 21 E 3 rs a Black  
Jack 4 Ins in dia brs S 22 W 5 rs.  
Thence South 615 rs to a S.E. corner  
of said Wm Murray survey a stake  
from which a Black Jack 3 Ins in dia  
brs S 28 W 3 rs. a Black Jack 9 Ins in  
dia brs N 10 W 6 rs. Thence West 450  
rs to another corner of said Wm Mur-  
ray survey. Thence North 900 rs  
to a corner of J. Murray survey a  
stake from which a Hickory 8 Ins  
in dia brs N 10 E 8 rs a Black Jack  
6 Ins in dia brs S 7 E 3 rs. Thence  
East 220 rs to a S.E. corner of said  
J. Murray a stake from which a  
Hickory 4 Ins in dia brs S 18 E 3 rs  
a Hickory 4 Ins in dia brs N 8 W 3 rs  
Thence North 547 rs to N.E. corner of  
said J. Murray survey a stake two  
Hickory pointers. Thence West 780 rs  
to S.W. corner of said Murray survey  
a stake from which a Black Jack

24

④  
Nac. 5-1203

82ns in dia brs S 32 N 62s.  
 A Black Jack 14 Ins in dia brs.  
 N 17 N 3 vs Thence North 573 vs to  
 the NE corner of said J Murray  
 survey. a stake from which a Hickory  
 5 Ins in dia brs N 40 N 7 vs a Sweet Gum  
 16 Ins in dia brs S 70 N 5 vs. Thence  
~~West~~<sup>East</sup> 68 vs. a stake from which are two  
 Black Jack pointers. Thence North 1025 vs  
 to H N Lusk's NE corner. Thence East 227  
 vs. to ~~Westly~~<sup>Westly</sup> Dikes S. E. corner. Thence North  
 129 vs a stake in the E Blin of said  
 Dikes survey. Thence East 160 vs to the  
 Beginning. Surveyed Sep 1<sup>st</sup> 1876.  
 Clinton Price. } H. S. Guinn  
 Dan Mallord. } S. C. C. } Co. S. C. Co.

State of Texas }  
 Cherokee County } J. H. S. Guinn Co.  
 Surveyor of Cherokee  
 County do hereby certify that the forego-  
 ing survey was made according to Law  
 that the limits boundaries and corners  
 of the same together with the marks nat-  
 ural and artificial are truly and cor-  
 rectly described therein and that said  
 field notes are of record in my office  
 in Book "b" on pages 25540.  
 This Sep. 2<sup>nd</sup> 1876. H. S. Guinn  
 Co. Sur. C. County

1-1166  
1-1203

NAC SCIP  
1203

at'

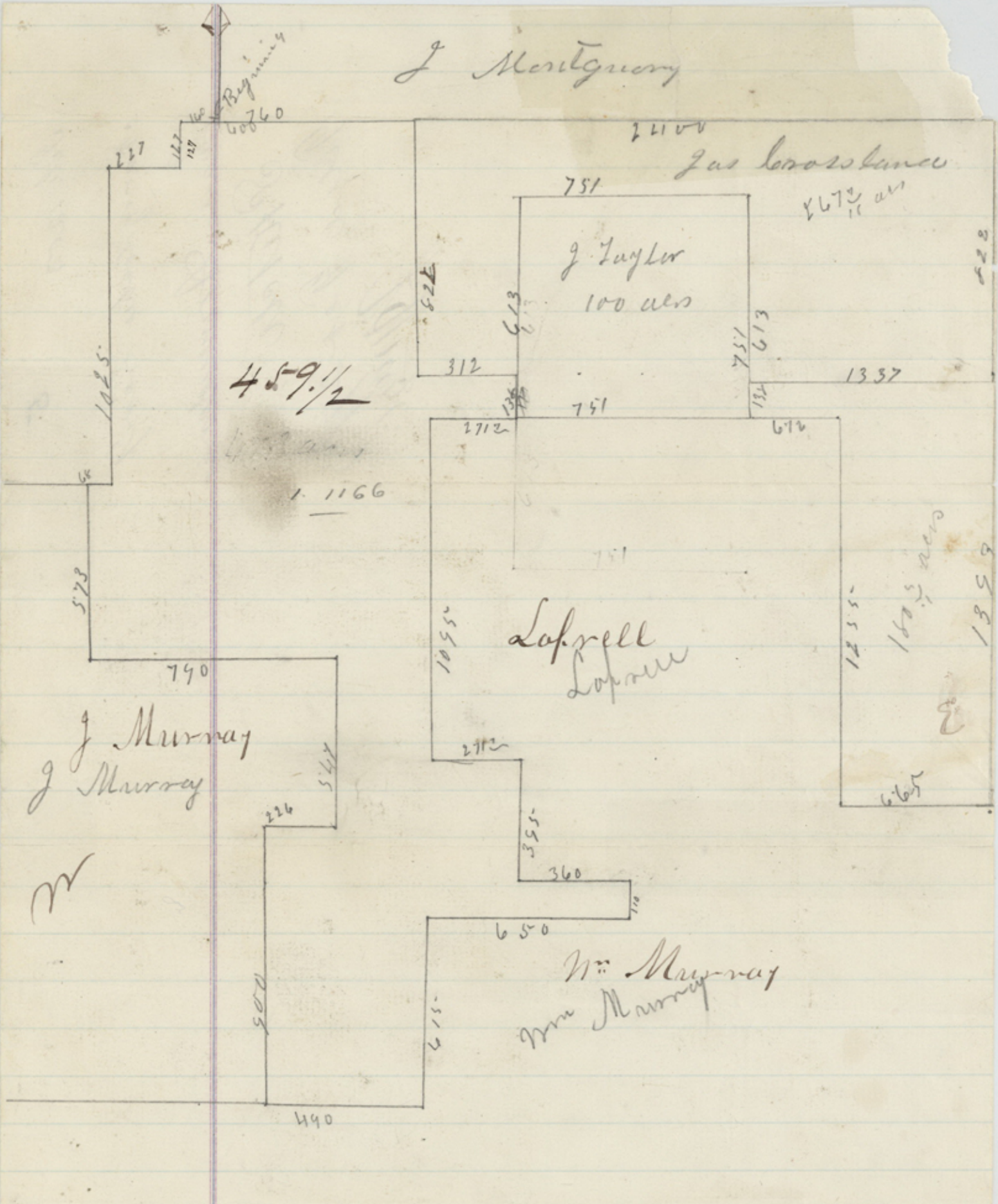
The State Tax - A Survey of  
County of Cherokee 459 7/10 acres of  
Land made by virtue of Lance  
Scrip No. 1 for Six Hundred & forty  
acres of Land issued to Juan Ar-  
menidas by J. J. Groves Com' Genl  
Land Office on the 23-day of  
Jun. 1875 in accordance with the  
provisions of "an act to encourage  
construction of canal & ditches  
for navigative <sup>and</sup> irrigation" approved  
March 10 - 1875

Said Survey is situated in  
Cherokee Co. on the waters of  
the Angelica river about 5 1/2 miles  
South <sup>48</sup> Eastward from the  
Town of Rust

Beginning at the SW corner  
of a Survey of 640 acres of land  
in the name of J. Montgomery  
a State from which a Post O  
200 is in dia brs N 36 W x 200 a Sout.  
Quint. 2 in dia brs S 40 E x 200  
thence 2000 to the NW corner  
of James Crossland's survey of 267 1/2 acres  
of land. A Stake from which a P. O.  
10 Ins in dia S 60 E 2 1/2. A P. O. 1 1/2  
in dia brs S 42 E 3 1/2. Thence S 82 W to  
SW corner of sd Crossland survey a stake

from which a Black Jack 8 Ins in dia br  
N40W15 vs Thence East 312 vs to a corner  
of said Crossland survey on the NB line  
of J. Taylor's survey of 100 acres Thence  
North 133 vs to the SW corner of said  
Taylor's survey of 100 acres on the NB  
line of the <sup>John</sup> Laprelle 640 acre survey a  
stake from which a Pine 18 Ins in dia  
br N39W2 vs. a Pine 20 Ins in dia  
br N39W8 vs. Thence West 272 vs to NW  
corner of the <sup>John</sup> Laprelle survey a stake  
from which a Black Oak 8 Ins in dia  
br N72W10 vs. a Black Oak 20 Ins  
in dia br N21W8 vs. Thence South  
1055 vs to SW corner of said <sup>Laprelle</sup>  
a stake from which a Hickory 8 Ins in dia  
br N18E2 vs a Hickory 8 Ins in dia  
br S56W10 vs. Thence East 271 1/2 vs  
to another corner of said Laprelle a stake  
from which a Black Jack 8 Ins in dia br  
S65W8 vs. a Hickory 10 Ins in dia br  
S6E8 vs. Thence South 395 vs to the S.W.  
corner of said Laprelle a stake from which  
a Black Oak 4 Ins in dia br S65E4 vs  
a Hickory 10 Ins in dia br N63W3 vs  
Thence East 360 vs to another corner  
of the Laprelle survey a stake from which  
a Hickory 8 Ins in dia br N39W4 vs  
a Hickory 16 Ins in dia br N11W8 vs.

J Montgomery



File 1203

5

Stacogdoehus Serip

Juan Armendaris

Sketch

Filed Feb 27/77

J. J. C.