

Leon County. 55

File

1899.

Robertson <sup>Abst. 1195</sup>  
PRE-EMPTION.

J. M. Crawford  
abst. 1195.

160 acres.

at May 26. 1873.

Correct on map of Leon Co.

11/13/91 C. W. Tate

Patent to original  
11/16/91 Bramlette  
et al

Pat. Nov. 20. 1891,  
Click

Mkd. ptd  
on map

M<sup>o</sup> 275 Vol 24

Mkd. Pat. Reg. <sup>con. c/4</sup>  
22439 <sup>c/3</sup> 91

91.

Abst. 15.

c June 12  
1894

CONTENTS.

No. 1. Affidavit.

No. 2. Field Notes.

No. 3. <sup>6/9/88. Deeded</sup>  
Cut of occupancy

No. 4. <sup>File of Oct. 26. 91.</sup>  
Cor. F. Notes

Reph J. D. Dainoff  
Centerville  
Tenn

D. F. Burroughs  
Raymond

The State of Texas } To the Surveyor  
County of Leon } of Leon County

The undersigned a resident citizen  
of the County would represent that he  
has <sup>actually</sup> settled upon a 160 Acres of Land  
which he believes to be public & unap-  
propriated domain; that he is the  
head of a family; that he is without  
a homestead; that he claims the same  
in good faith under the Homestead  
Donations Laws of the this State  
that said Land is situated in Leon  
County & bounded on the North by the  
Cooper Survey on the West by the W. J.  
Mason & Mrs. Castle, on the South by  
the Sarah Scott; on the East by the  
L. A. Moore; and that he desires the <sup>same</sup>  
Surveyed according to Law.

this the 2<sup>d</sup> day May 1888

D. M. Cranford

Sworn to & subscribed

before me on the 3<sup>d</sup> day

May 1888 B. F. Burroughs Notary Public

① File 1899.

Robert M. Preempt

J. M. Crawford

Affidavit

Filed June 8/88.

A. W. Kelley

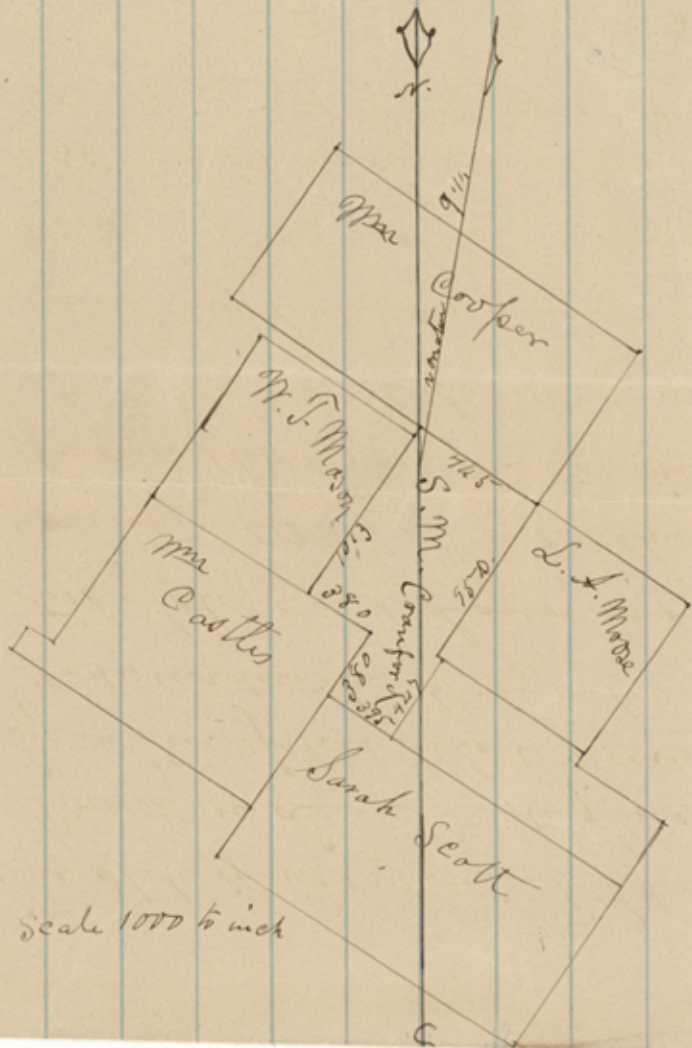
Chicago

Filed in office  
this the 30 day of May  
+ recorded in file  
Book's on page (73)

R. J. Bannock

Surveyor Leon

Co.  
Twp



The State of Texas J. Field Notes of 160 acres of land  
County of Leon Bnde for Seaborn M. Crawford  
by virtue of his filed presumption affidavit  
Made under the Homestead Donation Laws of  
this State, Said Land is situated in Leon  
County N 13 E. 7 miles on the waters of Wheelock Creek.  
from the town of Center ville.

Beginning at the S.E. Cor. of the Mrs Cooper 320 ac. sur. the same  
being the N.W. Cor. of the L. A. Moore Preemption Co.  
Marked by a Blk. Jack 27 in. dia + one 6 in. dia Mk'd (H).

Thence N. 55 W. with Coopers South line 745 vs to a stk in said  
line for cor. Whence a B. Jack 10 in dia bus S. 30 E. 4 vs.  
+ a Sec. 7 in dia bus N. 27 W. 5 vs. both Mk'd. H. + L.

Thence S. 35 W. at 63 vs. pass N. T. Masons N. E. Cor Mk'd by 2 B. Jac  
ks. 5 ft apart + continuing on Masons E. B. Line 1013 vs  
all to his S.E. Cor. Mk'd. by 2 B. Jacks on the N. line of the  
Mrs Castles 254 ac. Sur. Mk'd (H)

Thence S. 55 E. 380 vs. with Castles N. Line to his N. E. Cor. Mk'd  
by 2 B. Jacks one 5 + the other 10 in dia. Mk'd (H)

Thence S. 35 W. 380 vs. on Castles E. line to the N.W. Cor. of  
Sarah Scotts N.W. Cor. of 320 ac. Sur. Mk'd. by 2 B. Jacks. Mk'd (H)

Thence S. 55 E. 395 vs. on Scotts N. B. Line to a Stake.

Thence N. 35 E. 447 vs. to a stk in the S. B. line of the L. H. Moores  
Preemption 30 vs S. 55 E. from his S. W. Cor

Thence N. 55 W. 30 vs to Said Moores S. W. Cor. + Thence N. 35 E.  
on Said Moores W. B. line 950 vs to the Beginning,  
Donation 9/2. Surveyed May the 3<sup>rd</sup> 1888.

J. N. Lyon J. C. J. B. F. Burroughs  
- Balkam M. O. County Sur. Leon. Co. Tex.  
J. B. F. Burroughs County Sur. of Leon Co. Tex. do  
hereby certify that the above Survey was made on the  
ground + in accordance with Law, + that the Corners Measurements  
+ Courses are truly + correctly represented in the above plat +  
Field notes + further that the same is recorded in my

②  
File 1899.

Robert M. Crump  
S. M. Cranford

S. M. Cranford

D. Latt + Field Notes

Aspirates  
Fid Jones St.  
R. Stalley  
A. Chisick

These field notes make the N.W. corner of L.A. Moore & the S.W. corner of the W. Cooper idch = bcca. when the N.W. corner of said Moore is N 85° E from the S.W. corner of said Cooper. Surveyor makes the distance between S.W. line of W. Cooper and the N.E. line of the W.T. Mason 60 rrs. when by calculation said distance is 100 rrs. Again in his 6th call surveyor runs N 35° E 447 rrs to L.H. Moore's South boundary line. Now there is no such survey, & this last, on record, and if surveyor means L.A. Moore, he is egregiously mistaken in the distance. For it is 1075 rrs instead of 447 from Sarah Scott's N.E. boundary line to L.A. Moore's S.W. boundary line. Correction or explanation required.

8/1/91 C. O. Tate  
C. O. Tate  
C. O. Tate

4094410.  
Spec in Vol. 3 pages this May 12th A.S. 1888.

W. E. Cunningham  
Surveyor - Leon, Co. Tex

The State of Texas } Before me, the undersigned authority,  
County of Leon } in & for the County aforesaid, this day  
came & personally appeared Deaborn M. Crawford,  
a resident Citizen of said County, who being by me  
duly sworn, declares he is a Bona fide settler upon one  
hundred & sixty acres of vacant public land, situated in said  
County, and surveyed for him on the 3<sup>d</sup> day of May 1888 by  
B. F. Burroughs Surveyor of said County; that he has occupied  
& improved the same as a homestead for the period of three  
years, beginning on the 12<sup>th</sup> day of Sept 1884 the date of his  
first file & that he is a married man & the head of a family and  
has kept his file continuously up annually up to the present  
date & that he has used every effort in his power during all  
this time to have his Preemption Survey even offering the Surve-  
yors his fees to do the work & for causes unknown to him they  
did not survey it for him & that he makes this affidavit  
for the purpose of obtaining a title to the same for a Homestead  
under an "Act for the benefit of actual Occupants of the  
public Lands," approved May 26<sup>th</sup> 1873, and that he has not a Hom-  
estead other than the above.

And also at the same time came & personally appeared J. N.  
Lyon & J. M. Lyon, two credible resident Citizens of said Co-  
unty, to me well known, who, being duly sworn, depose and  
say that Deaborn M. Crawford the person first above named  
in this affidavit, has actually settled upon and cultivated as  
a homestead the Land surveyed for him on the 3<sup>d</sup> day May  
1888 by the Surveyor aforesaid, for the period of three years,  
and they, nor either of them have any interest in said  
Land

D. M. Crawford

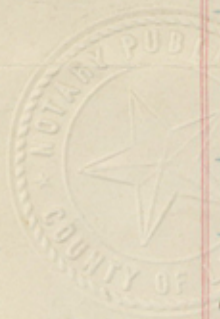
J. N. Lyon

J. M. Lyon

Sworn to and subscribed before me, and I do hereby Cer-  
tify J. N. Lyon & J. M. Lyon are credible Citizens of said  
County, In Testimony Whereof, I have hereunto set my hand  
and affixed the impress of my official Seal, this the 3<sup>d</sup> day May 1888

B. F. Burroughs

Notary public Leon Co Texas

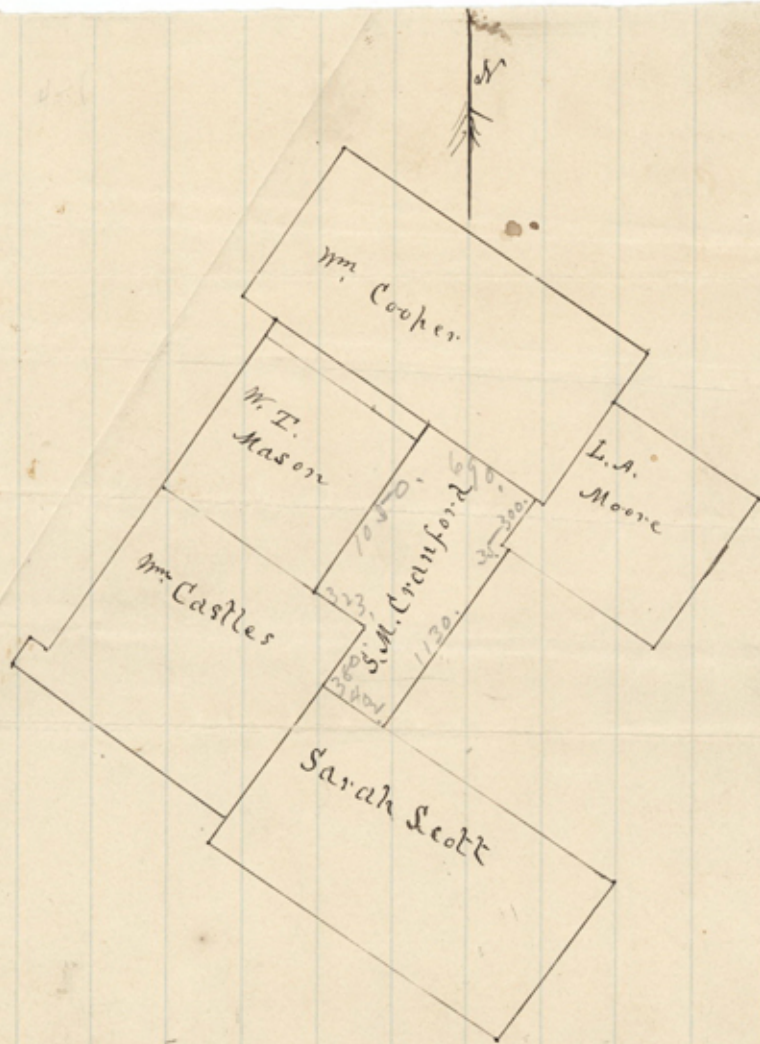


3

Dec 1899.  
Roberton Receipt  
S.M. Crawford  
Cert of  
Occupancy  
Dated June 8/88.  
R. W. Mully  
Chief Clerk.

Seaborn Mc Crauford  
Occupancy





Scale 1000 ft to the inch

The State of Texas }  
 County of Leon } Corrected field notes of a Survey of 160 acres  
 of Land made for Seaborn M. Cranford by virtue of his  
 pre-emption affidavit file, made under the Homestead  
 donation laws of the State of Texas, situated in Leon County  
 on the waters of Whelock Creek about 9 miles N 13° E from  
 Centreville. Beginning at the corner of  
 L. A. Moore's 157 Acre Survey on the S.W. boundary line of  
 the Wm. Cooper 320 acre Survey a B.f. brs N 58° W 100 vs. and a  
 B.f. N 79° E 100 vs. Thence N 55° W 690 vs. with said Cooper's line  
 to a Stake whence a B.f. 10 in. dia. brs S 30° E 4 vs and a B.f.  
 7 in. N 27° W 5 vs. Thence S 35° W at 100 vs W. L. Mason's East corner  
 at 1050 vs, his South corner on Wm. Castles' line a Stake whence  
 a B.f. brs N 32° E 7 vs and a B.f. N 42° W 8 vs. Thence S 55° E 323 vs  
 with said Castles line to his East corner a Stake whence a B.f. brs  
 South 5 vs. and a B.f. North 6 vs. Thence S 35° W 380 vs on  
 said Castles S.E. line to Sarah Scott N.W. corner a P.O. brs. N 5 1/2° E  
 8 vs and a P.O. S 77° W 10 vs. Thence S 55° E 402 vs with said  
 Scott's line to a Stake whence a B.f. 7 in. dia. brs. N 23° W 5 vs and  
 a B.f. 4 in. N 36° E 6 vs. Thence N 35° E 1130 vs a Stake for corner  
 in the S.W. bdy. line of L. A. Moore's Survey whence a B.f. 8 in. dia  
 brs. S 70° W 4 vs and a Pine 4 in. N 15° W 3 vs. Thence with his line  
 N 55° W 35 vs to his West corner a B.f. brs N 85° E 1 vs. Thence  
 with said Moore's N.W. bdy. line N 35° E 300 vs. To The beginning.  
 Bearings Saddle mkd. Variation Needle 9. 45' East.

Surveyed Oct 8<sup>th</sup> 1891

L. A. Moore } chain } Jas. A. Brown  
 Stephen Pate } carriers } C. S. L. C.

The State of Texas }  
 County of Leon } I Jas. A. Brown County Surveyor of Leon  
 County Texas do hereby certify that the foregoing Survey was  
 made according to law - That it was made in the field and  
 is correct, and the corners, marks and distances are correctly  
 described in the foregoing plat and field notes and is  
 recorded in my office in Book No 3 page 450

Jas. A. Brown  
 C. S. L. C. Tex.

4  
File 1899

Robertson Trs  
S. M. Cranford  
Field Notes Co.

Filed Oct. 26<sup>th</sup> 1899  
160 acres

Granite  
Chip Clerk

Correct on map of Leon Co.

11/13/99 C. M. Tate  
Pat. <sup>160</sup> Nov. 20<sup>th</sup> 1899  
Chick  
on tray

S. M. Cranford  
Robertson Field Notes

11/13/99  
C. M. Tate