

Feb 1861

Milam 1<sup>st</sup> Class

W. T. Maland

3420400 Sq Vrs

5201.144 Sq

Deft. H R Cont 29/236

~~see 1846 Mil 1<sup>st</sup> Class~~

General on map of Bosque Co. 4000 429,500 sq. vrs. Oct 17/72. Col. H. C. ...

Covers 3-2481 and B-1692 - otherwise correct on map of Bosque County for 3,420,400 sq. vrs. August 12/92

Corrected by G. W. Pressler.

Patent to original 8/19/92 Brantlett Chf. Clk

W. T. Maland Sept 2, 1892

This survey was not abandoned, but the certificate appears to be withdrawn Oct 17/72 to locate a balance of 2,903,803 sq vrs. See Chief Clerk's endorsement on cert. in file 1846 mil 1.

1677/1 Deer 3/85 Robinson

Vertical text on the right side of the top page, including numbers like 1421 and 1199-92, and some illegible handwriting.

Van Curo  
1. The ...  
Oct 24/78 ...  
2 Cor. ...  
6 Def August ...  
M. Knight  
July 9/92  
Texas

The State of Texas Field note of a  
 County of Bosque Survey of 5201144  
 Square varas. of land made for  
 William T Malore by ~~virtue~~ it  
 being part of the land to which he  
 is entitled to by virtue of Dupli-  
 cate Certificate No 29/230 First Class  
 1/3 League issued by the Commissioner  
 of the General Land Office March  
 20<sup>th</sup> 1841

Situated on the waters of Steels  
 Creek and the East Bosque about 7 miles  
 N 30 W from the Town of Meridian  
 Beginning at a Stake the S W  
 Corner of a Survey in the name of  
 John Henry ~~in~~ in the N line of  
 George Kelly running thence N 30  
 W 1200 varas a bronze of Steels Creek  
 at 1344 varas a Stone Post the S E Cor-  
 ner of a Survey made for W H Burni-  
 ngham thence S 60 W 950 varas the S W  
 Corner of W H Burningham's Survey in  
 prairie thence N 30 W 500 varas a bronze  
 at East Bosque 950 varas Cummings N W  
 Cor a live oak mark H lies N 74 E  
 900 varas thence N 60 E 400 varas the  
 same bronze 950 varas the N E Corner  
 of Cummings' Survey in the  
 W line of a Survey in the name of  
 A B King a live oak mark H lies  
 N 20 E 1000 varas thence N 30 W 593 varas

To the N<sup>W</sup> Cor of A & B King in the  
 South line of another Survey in the  
 name of A. B. King Thence S60<sup>W</sup> 105000  
 to the line of a Survey in the name of  
 Henry Billingsly Thence S30<sup>E</sup> 370000  
 the S<sup>E</sup> Corner of Henry Billingsly Survey  
 Thence S60<sup>W</sup> 1344000 to the N<sup>E</sup> Cor of  
 a Survey in the name of S. W. Lively  
 Thence S30<sup>E</sup> 1900000 to the S<sup>E</sup> Cor of  
 George W. Lively Thence N60<sup>E</sup> 980  
 0000 to the N<sup>E</sup> Corner of John B.  
 Wilcox Survey Thence S30<sup>E</sup> 1900000  
 a State in the line of Peter B. Wilson  
 Thence N60<sup>E</sup> 394000 to the W line  
 of George Kelly Thence N30<sup>W</sup> 950  
 0000 to the N<sup>W</sup> Cor of George  
 Kelly a State in the prairie  
 Thence N60<sup>E</sup> 1050000 the beginning

J. Elliott

W. A. C. M. M. M.

Chas. C. C.

Surveyed July 15<sup>th</sup> 1872  
 J. H. Scrutshfield  
 County Surveyor B Co

I J. H. Scrutshfield County Surveyor  
 of said County do hereby certify  
 that I have carefully examined the  
 above field notes and find them  
 correct and that they are duly  
 recorded in Book B page 137  
 in my office

Witness my hand July 20<sup>th</sup> 1872  
 J. H. Scrutshfield  
 County Surveyor B Co

Witnessed by correct witnesses.

Witnessed by correct witnesses  
 July 12/72

3.2481  
 B.1692

Feb 1971  
 Meadland 1 acre  
 Feb 20. 1872  
 Wm J. Meadland

Feb 29 9/72  
 1007

I N. B. Raudol Co Surveyor of Bosque  
County Texas do hereby certify that  
the foregoing survey was made according  
to Law and that the limits and bound-  
aries with the marks, natural and arti-  
ficial are truly described in the foregoing  
plot and field notes and that the  
survey was actually made on the ground

N. B. Raudol

Co Surveyor Bosque  
County Texas

Recorded in Book 2, page 232 of

Bosque Co Sur. Records.

1761 mile 1<sup>st</sup>

1846 mile 1<sup>st</sup>

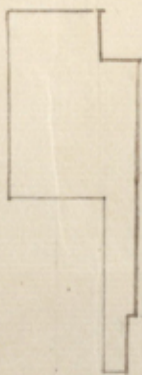
The State of Texas } Computed field notes of W. P.  
 County of Bosque } Malone sur. of ~~658~~<sup>3,420,400</sup> ~~5454~~ acres  
 by virtue of duplicate certificate No 29/286, first class 1/3 League issued by the Comr of the General Land office March 20<sup>th</sup> - 1871. Said survey is situated on the head waters of Steets Creek and East Bosque about 14 miles N38W from the town of Meridian

Beginning at the NW cor of Geo Kelly sur. Thence S30E 566 to a pile of rocks for cor. Thence S60W 400 to cor on east line of J.R. Wilson Thence N30W 1804 to said J.R. Wilson NE cor. Thence S60W 950 to said J.R. Wilson NW cor. Thence N30W 1900 to cor in prairie on south line of H Bellings. Thence N60E 1050 to cor on west line of A. B. King Thence S30E 450 to A. B. King's SW cor. Thence N60E 400 to a pile of rocks for cor in prairie and NW cor of another survey in the name of A. B. King Thence S30E 2688 to rock pile for cor on north line of Geo Kelly sur Thence S60W 100 to the place of beginning

Resurveyed June 11<sup>th</sup> & 12<sup>th</sup> 1886

Chain carriers  
 J Smith  
 H Jones

W. B. Raydel  
 Co Surveyor Bosque  
 County Texas



2000.00 per inch

Variation 10°

S

② File 1761.  
Milam 1<sup>st</sup> Class.

W. J. Malone

Corrected

3.420,400  
Files July 7/86.

D N Robinson  
Chief Clerk

Covers 3- 2481 x B- 1692 - other  
wise correct and map of  
Bosque County for 3,420,400  
sq. vrs. August 12/92

E. W. Pressler.

correct for only 606 acres  
or 3,420,400 sq vrs

July 15/92  
Patented Sept. 21<sup>st</sup> 1892

75-4 Dawson