

1 Bosque Co 74
1560
1560

Milam Bty

B-A6-901

M-A6-308

Luther S. Dunbar

320 ac

242 242

486

562

Bty W. No 4113. R

See B. 1628

Small survey covered by file 3-1183, other
misc correct on map of Bosque Co.
Sept 1874

Survey of 242 acres correct and map
of Milam County, April 14/75

Both surveys made by C. W. Proffers
made filed Reg.

Both surveys correct

final ruling.

June 11/75

Both surveys attended

June 11/87

on 153 & 154. 242
on 242. 153 & 154. 242

Map 11395.

1. co. co. Jan. 7. 74. Richardson

1. Cert & Transfer
2. Transfer
3. Power of Atty
4. D. S. field notes Dec 11th 75

960

562

398

Confirmation

any 20/75

6 Resurvey.

Sept 11

1. Certificate

No. 1, 2 & 3 cert of file.

authentic. Nov. 16/78.

shows that Dunbar

he sent to any reg

questions; it is of national

the names of the two

names; they were

written by the same person, and

were written long after the

was written long after the

was written long after the

was written long after the

was written long after the

was written long after the

was written long after the

was written long after the

was written long after the

was written long after the

was written long after the

was written long after the

was written long after the

Milton S. Donnell

Milton S. Donnell

Milton S. Donnell

Milton S. Donnell

State of Texas Survey of 486 acres of land
County McLennan by virtue of Bounty Land
warrant No 4118 for 1280 acres issued to Luther
S Dunbar situated between the waters of
Hog Creek and Midale Bogue about 18 miles
N W from Waco

Beginning at the N E corner of the
N McCalup a pile of stone in line of David McF
addan presumption

Thence N 30 W 890 varas with said
McFadden line to pile of stone the S E corner of
V Le Cannon 160 acre presumption

Thence S 60 W with line of said
presumption 950 varas to a pile of stone the S W cor
of said V Le Cannon

Thence N 30 W at 950 var a pile
of stone

Thence N 60 E 347 var a pile of stone
to the Nubby S E corner

Thence N 30 W 394 with line of the
Nubby S E cor of Isaac Babb

Thence S 60 W passing at 950 corners
and 1461 varas to pile of stone in E line of J T
Black presumption

Thence S 30 E 284 varas to pile of
stone in north line of A G Black

Thence N 60 E 200 to a pile of
stone A G Blacks N E corner

Thence S 30 E 950 varas to A G
Blacks S E corner in N line of Menie presumption

Thence N 60 E 330 varas pile of
stone Menie N E corner

Thence S 30 E 1115 varas Menie S E corner

Thence S 60 W 321 varas pile of stone in
South line of Menie

Thence S 30 E 1262 varas pile of
stone in North line of E Blundell

Thence N 60 E 515 varas to the S W
corner of McCalips presumption

Thence N 30 W 1344 varas to corner
of 80 acre presumption claimed by White Logan

Thence N 60 E 1344 var to the Beginning
Surreyed September 11th 1873

Chain to W McCalip

Alex McCulloch

barriers from Glenn

County Surveyor McCalip

I Alex McCulloch County Surveyor McCalip
County do hereby certify that the above field
notes are correct and were made according
to law and marks & bounds both natural and
artificial are truly and accurately described and
the field notes recorded in Book A page 370
in my office

Alex McCulloch
County Surveyor McCalip

Filed Dec 11 1873
L. G. & M. W. W.
No. 6

Miller's survey

A

M. W. W. Co. 74

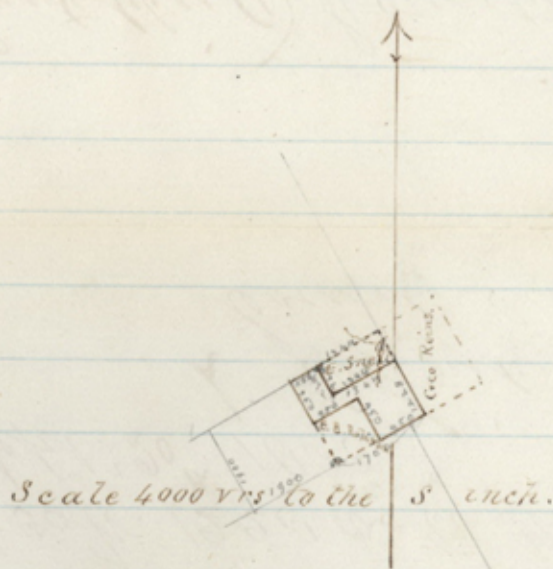
Feb 15 60

Melrose Poly
Field No 48
Luther S. Dunbar
Filed Dec. 11 " 1873

This survey does not close
Error in S. W. corner, in W. 33 varas.
It calls to begin at the NE corner
of the H. W. McCall survey in the
Westline of D. H. Fadden.
This does not agree with the
map, which shows a distance
of about 700 varas between the
Call and Fadden lines.
According to a certified sketch and state-
ment of Neil McCall dated Dec 11/69
(file 3-2094) the H. W. McCall 160 acres
survey file 3-2093 begins 1000 varas
N 60 E from the NE corner of the F. Blun-
dell 1/2 league and said sketch re-
sults the distance between the Call
Eastline and the McCall Westline
to be about one mile.
Required correction of error and
explanation of the above discrepancies
and a certified sketch showing this
survey in connection with about 2
miles of its surroundings.
Error in S. W. corner ^{Dec 2/74} 5-4 varas
Error in W. 33 varas
Jan. 7. 74 Richardson

The State of Texas }
 Prosque County } Field notes of a survey
 made for being part of the
 land to which he is entitled by
 Certificate No 4118 issued to Luther S.
 Dunbar, dated July 31st 1838, by the
 Secretary of war - containing 320
 acres. Situated ^{in Prosque County} about 17 miles S 20 E from Meridian

0061
 712
 1771



Beginning at the S. E corner of Edmond ^{P-1006}
 Snell's pre-emption, a mound of rocks

Thence S 60 W. 1344 vrs to Snell's S. W. corner.
 From which a live oak marked F, bears
 S 30 W 310 vrs and another marked S
 bears N 62 1/2 E 45 vrs.

Thence N 30 W. 672 vrs to Snell's N. W.
 corner from which a live oak marked
 X bears N 45 W. 22 vrs.

Thence S 60 W. 556 vrs to the N. E corner of

5 File 1560
Milawa Bdy
Field notes. 320 a.
Luther St Dunbar

1/2 E 1/2 Sec 33
Twp 36 N
R 10 W

On a survey file 2-1183. otherwise correct
on map. of Borgue County.
Jan 5/74
April 14/75 C.W. Pfeiffer
(Surrounded.)

Patented June 11/94

Wm & H Southwick
Esqrs Auger Borgue Co

I, J. H. Southwick of Borgue County, do hereby certify that
the foregoing plat and field notes
are correct and that the survey was
made according to laws.
Recorded in Book No 3 Page 140.

From 9. Thence survey, a cedar marked
X bar. 1308 2000
Thence 1308 950 m to E. P. Robertson
pre-emption, a mound.
Thence 160 E. 950 m to Robertson's A. E
corner
Thence 130 E 950 m to Robertson's 1 E
corner on the point of an ancient
Thence 160 E 950 m to the 1 E corner
of this in the 1. line of George Reins
survey.
Thence 130 N. 1220 m to the beginning
surveyed. Sept 12th 1863.
J. H. Southwick
County Surveyor
Borgue Co.

State of Texas }
Mil 15th 1853 }
W^o Linnam County }

Field notes of
a survey of ²⁴² ~~251 1/2~~ acres of land
made by virtue of County War-
rant N^o 4118 for 1280 acres of
land issued to Luther S. Ham-
bar. Said land is situated in
W^o Linnam County between
the waters of Hog creek and
Middle Bosque about 16 miles ^{N. 84° W.}
from Waco

Beginning at the
N. ~~W.~~ cor. of a survey in the
name of W. J. Johnston in the
^{4th Sec.} West line of a survey in the
name of David W^o Fadden
a pile of stones for cor.

Thence N 30
W 840 varas to the ~~N.~~ ^{East} cor of
a survey made for D. C. Cannon
for the ~~N.~~ ^{East} cor of this survey
a pile of stones.

Thence S 60 W
1575 varas partly with the
S line of said Cannon survey
to the ~~N.~~ ^{East} cor of a survey made
for ^{W. J.} Musick a pile of stones
the ~~N.~~ ^{West} cor of this survey

Thence S 30 E with the ^{North} East
 line of said Musick's survey ¹⁰⁴² 400 varas
 to the S.E. cor of Musick. Thence
 N 60 E 231 varas to pile of stones for
 cor. Thence N 30 W 202 varas to
 pile of stones for cor. Thence N 60 E
 1344 varas partly with line of
 H. P. Johnston to the place of
 Beginning containing pasture
 land. Surveyed Aug. 13th 1874

C. Zipper } b
 E. Zipper } b

A. M. Randolph
 Geo. Sur. M^cL. Co. Tex.

I A. M. Randolph County Surveyor
 of M^cLinnau County do hereby cer-
 tify that the above survey was made
 by me according to law, and
 that the metes and bounds with
 all marks both natural and artificial
 are truly described in the above
 field notes, and that the same are
 Recorded in Book A page 377 of
 my office, at Waco.

A. M. Randolph
 Geo. Sur. M^cL. Co. Tex.

File 1560

Milam Cty
 Resurvey of
 Field Notes of
 242 ~~1/2~~ ac
 Aug 20/74

Correct and map of
 M. Cleman County. April 14/75

(Surrounded) C. W. Puffer

Patented June 11/875

It is Davis

Does not close by 5000 ft of
 made to close by shortening
 length of 3rd course, will
 contain 242 ~~1/2~~ ac
 Aug 20/74

C. C. April 14/75
 C. W. Puffer

Hon. J. J. Good
Sir

Waco Texas
Sept 17th 1874

In the matter of the
resurvey calling for 231 1/2 acres
made by me Aug 13th 1874 for Luther
S. Duntar on Bounty Warrant No 4118
I have corrected my records so that
the quantity called for is 242 acres
and the distance on third course
instead of 1100 I have changed
to 1042 varas, said call for course
and distance reading as follows
Thence S 30.0 with the East line of
said Music survey 1042 varas
said corrections having been made
on the Records of my office, you will please
have corresponding changes made in
the field notes on file in the General
Land Office, and oblige Yours Resp
A. M. Randolph
Co. Sur, M^o, L. Leo, Tex.

7. Milan File 1568
Devar Bounty
Correction of fieldnote

Luther. Dumbax

Jan Sept 19 76

J. P. C.

Correction applied

9.

B-1560

Luther G. Dunbar's original survey of 486 acres embraces all the land to Isaac E. Bibb's Settlement - this survey was afterwards reduced to 242 acres and ptd.

B-1628

Another survey in the name of L. G. Dunbar, calls for 279 acres, but its fieldnotes are incomplete as it does not close in Northings by 854 ors and in Westings by 524 ors, but to judge from the corners called for, it covers the same ground as the original survey in B-1560 for 486 acres.

Jos Conis survey 1-2025. covers the original survey of Dunbar, ^{B-1560} (including the ptd portion) and also Dunbar's survey B-1628.

P.



Twenty-five cents for examining each Survey. Please remit in advance.

General Land Office.

Austin, *188*.....

File - 1560
Milam Bay