

2 Houston Co

File 109.

1350  
10

Houston Co. S. Chap  
9657-323-324

Benj<sup>n</sup> Davis

373 Ams  
328  
641

Both surveys correct on map.  
Jan. 8. 1848. Greerland.  
H. mtd. pld.

Both Surveys Correct  
for planting  
Crosby

Both Surveys Patented  
1847. Dec 22nd 1847  
Johnson

SS mt 429 vol 2  
SS mt 430 vol 2

File 3313

Content  
to L. Certificates.  
Joh. Friedmats.  
Aug 16/78 Luck

Republic of Texas  
County of Houston

3<sup>d</sup> Slip

No 108

also among

This is to Certify that Benjamin Davis is entitled to  
a Conditional and a half right of Six Hundred  
and forty Acres of Land according to an Act  
passed January the 4<sup>th</sup> 1839 Entitled Provision  
of Land to Settling Emigrants

Attest

Given under Our hands  
& Great Seal the 11<sup>th</sup> Nov 1839

David Albright  
Clk. Co. Court  
& Ex. of the Board  
H. C. T. C.

John Collins, Chief Justice  
William Hilliard, J. P.

" " " "  
" " " "

File 109  
Mus Am C: 3.º Clap

---

Cert. Certificate  
Benjn. Davis  
640 land

---

---

Benjamin Davis  
Certificate  
for 640 acres

---

2

Republic of Texas No. 61  
 County of Houston 3<sup>d</sup> Class  
 Benjamin Davis  
 is entitled to Six hundred and fifty  
 acres of land by virtue of Certificate  
 No. 108 dated 16<sup>th</sup> day of December  
 A.D. 1839 granted to him by the Board  
 of Land Commissioners for the County  
 of Houston. He hereby swears to us  
 that he has resided in the Republic  
 three years and performed all the  
 duties required of him as a citizen

Given under our hands  
 at Crockett this 3<sup>d</sup> day  
 of July A.D. 1843

E. Gopett

Chief Justice and  
 St. Officio Pres. of T.S.  
 Land Com.

Attest

John S. Pettit Associate

Chas. St. Nelson C.M. County Court and  
 St. Officio C.M. Board Land Com.

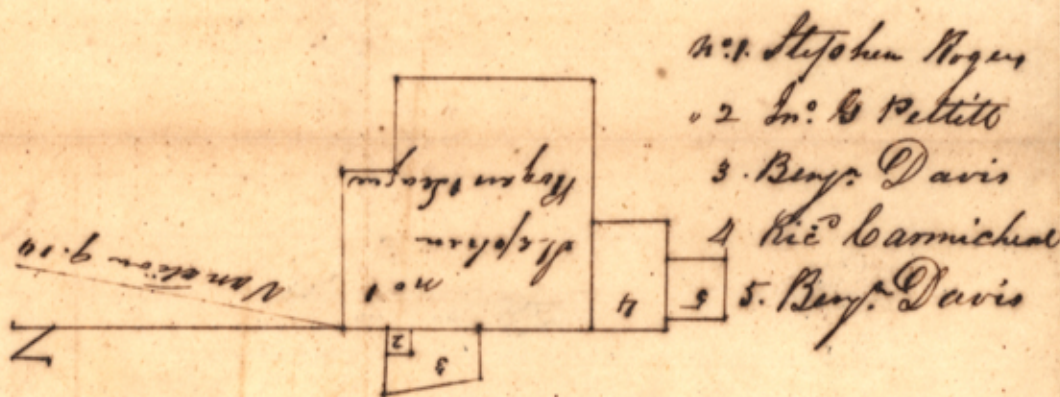
By Isaac W. Freeman  
 Deputy

2<sup>d</sup> File 109  
Mustm C. 3<sup>d</sup> Chap  
Museum Certificate  
Benj<sup>n</sup> Davis  
Carlton

Reg. No. 5258  
Carlton  
⑦

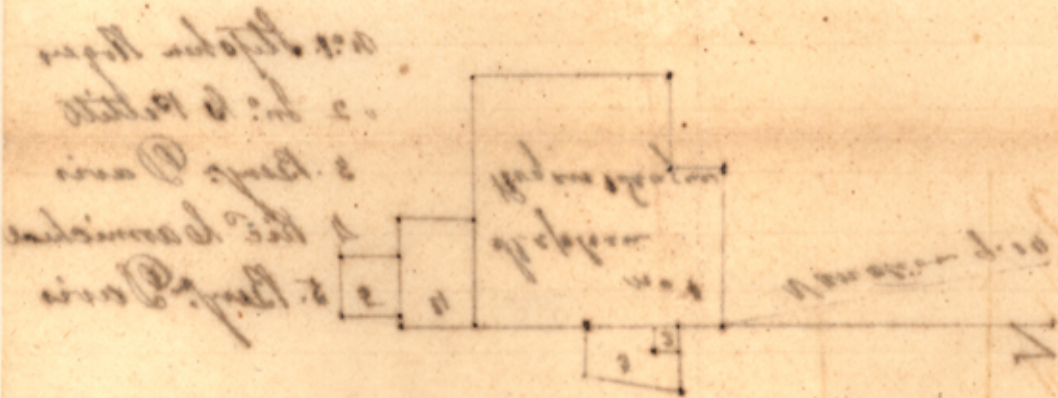
Benjamin Davis  
Land Certificate

6110



The State of Texas }  
 Houston County }  
 Survey for Benjamin Davis 268 acres of Land situated  
 in Houston County on the Waters of the San Pedro Bay  
 of the Neches it being the balance of the quantity to  
 which he is entitled by virtue of certificate N<sup>o</sup> 61  
 issued by the board of Land Commissioners for the County  
 of Houston

Beginning 1570. vs. South of Stephen Rogers, League  
 on the South boundary of Ric<sup>d</sup>. Carnicheal's 140 acre  
 Survey set State from which a Black Jack Mk<sup>o</sup>  
 B.D. bears S 35° E. 4 1/10 vs. dist and a Black Jack Mk<sup>o</sup>  
 X bears S 34° W 4. vs. dist, Thence South 1216 vs set  
 State from which a Black Jack Mk<sup>o</sup> B.D. bears S 82° E  
 dist 6 1/10 vs. and a Black Jack Mk<sup>o</sup> X bears North  
 dist 7 2/10 vs. Thence East 850 vs. branch C. A.  
 1216 vs. set State from which a Black Jack  
 Mk<sup>o</sup> B.D. bears N 29° E. 2 1/10 vs. dist and a post Oak  
 Mk<sup>o</sup> X. bears N 72° W 15. vs. dist, Thence North  
 1216 vs. Intersect said Carnicheal's Survey set State  
 from which a Black Jack Mk<sup>o</sup> B.D. bears S 17° W  
 7. vs. dist and a Black Jack Mk<sup>o</sup> X bears S 50° W 14 1/10  
 vs. dist. Thence West with said Survey 840 vs. branch  
 C. North 1216 vs. to the beginning corner Oct 9. 1846  
 B. Davis } Chain  
 H. Pate } Carriers  
 W. Dickerson Surveyor  
 Houston County



I W. Dickerson Surveyor for Houston do hereby  
 Solemnly Swear under my Official Oath that the  
 Survey designated by the foregoing plot and field-  
 notes was made by me on the 9<sup>th</sup> day of October  
 1846 and that the lines boundaries and corners of the  
 same together with the Marks Natural and Artifi-  
 cial are truly described therein

Witness my hand the 10<sup>th</sup> day of October  
 A.D. 1846 W. Dickerson Surveyor  
 for Houston County

J. W. Dickerson District Surveyor for the District of Houston  
 do hereby Certify that I have examined the foregoing plot  
 and field notes and find them correct and the Survey made  
 according to Law, and that the said field notes are  
 Recorded in Book. 6 page 18

Given under my hand this 20<sup>th</sup> day of  
 Oct. A.D. 1846 W. Dickerson District Surveyor  
 for the District of Houston

20  
Houston Co  
70  
File 109  
Houston Co. 3<sup>d</sup> Chap  
Benj<sup>n</sup>. Davis  
Field notes. 1848

---

---

Patented  
John Low

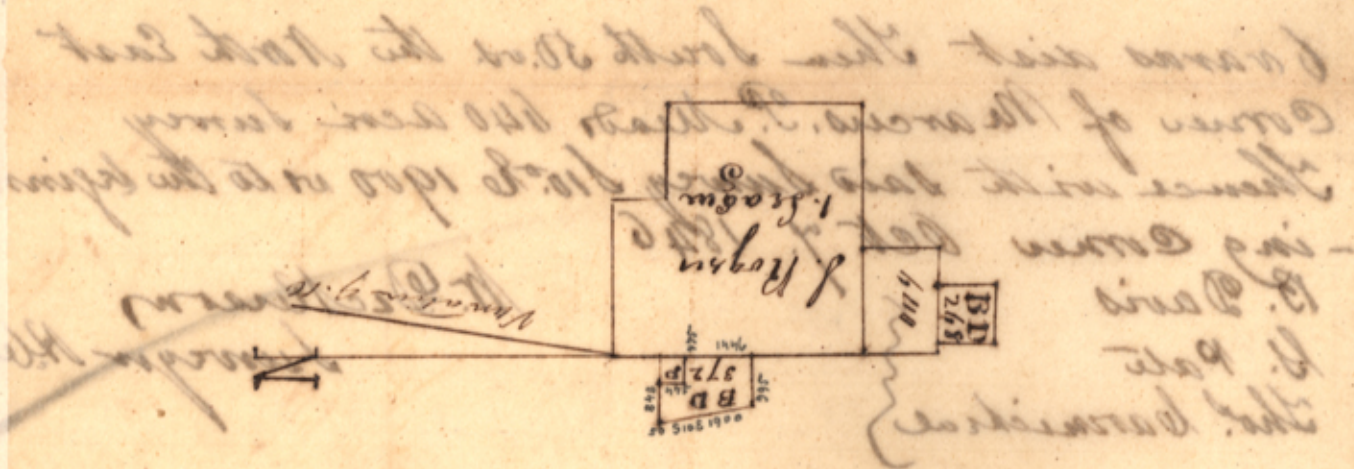
Benj<sup>n</sup>. Davis  
Certificate of field notes

24-1848  
Merely to be deposited  
in Gen<sup>l</sup>. Office by me  
S. L. M.

---

See 13-50 & 5 paid

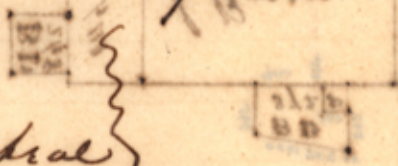
20



Surveyed for Benjamin Davis 372 acres <sup>of Land</sup> situated in  
 Houston County on the waters of the San Pedro Bayou  
 of the Arches, it being a part of the quantity to which  
 he is entitled by Vial of Certificate No. 61 issued by the  
 board of Land Commissioners for the County of Houston  
 Beginning at the South East Corner of Marcus P.  
 Mead 640 acres a stake for corner from which  
 a white Jack Mk. M bears S 60° W 3 <sup>1</sup>/<sub>10</sub> vs. vs. dist  
 Thence East 995 vs. Intersect the West boundary  
 of Stephen Rogers, League, set stake from which a  
 sand Jack bears N 55° E. dist 11 <sup>4</sup>/<sub>10</sub> vs. and a sand Jack  
 bears N 49° W dist 7 <sup>7</sup>/<sub>10</sub> vs. Thence North with said  
 Rogers, West boundary 1496 vs. to the S. E. Corner of  
 John H. Pettitt, 110 acres Survey set stake from which  
 a sand Jack Mk. X bears S 70° W 19 vs. dist and a Red  
 Oak Mk. B. D. bears S 55° W 23 vs. dist, Thence west  
 with Pettitt, Survey 1445 vs. to his S. W. Corner a stake  
 from which a Black Jack Mk. B. D. bears S 7° W  
 5 <sup>4</sup>/<sub>10</sub> vs. dist and a Black Jack Mk. J. P. bears N 37° W  
 1 <sup>3</sup>/<sub>10</sub> vs. dist. Thence North with same Survey 160 vs.  
 Cross branch C. N. E. 1175 vs. to his N. W. corner set  
 stake from which a post Oak Mk. B. D. bears  
 S 30° W 14 varas dist and a Hickory Mk. X bears  
 N 35° E 5 vs. dist Thence West 848 vs. set stake  
 from which a Black Jack Mk. B. D. bears S 57° E  
 8 varas dist a Hickory Mk. X bears N 40° E  
 Turn over

Coaras dist Then South 50. vs the North East  
 Corner of Marcus. P. Meads 640 acre Survey  
 Thence with said Survey S10. E 1900 vs to the beginn-  
 -ing Corner Oct. 7. 1846  
 B. Davis  
 G. Pate  
 Tho. Carmichael }

W. Dickerson  
 Surveyor Also



I W. Dickerson Surveyor for Houston County, do hereby  
 solemnly swear, under my Official Oath, that the Survey  
 designated by the foregoing plot and field notes was  
 made by me on the 7<sup>th</sup> day of October 1846 and  
 that the lines, boundaries and Corners of the same  
 together with the marks, Natural and Artificial  
 are truly described therein.

Witness my hand the 10<sup>th</sup> day of October  
 A. D. 1846

W. Dickerson Surveyor for  
 Houston County

I, W. Dickerson District Surveyor for the District of Houston  
 do hereby certify that I have examined the foregoing plot  
 and field notes and find them correct and the Survey made  
 according to Law and that the said field notes are there-  
 and in Book. 6. page 16-17

Given under my hand this 25 day of Oct.  
 A. D. 1846

W. Dickerson District Surveyor  
 for the District of Houston.

41

File 109.

Houston Co  
50

Austin C. 3<sup>d</sup> class

Field notes 27 3 lines

Benj<sup>n</sup> Davis

Palmer  
Johnson

Benj<sup>n</sup> Davis  
Certificate of field notes